



SVS *Semper Vigilo Security*

**COUNTERMEASURES
TRAINING**

FORTES CADRE CADRE NON POTEST

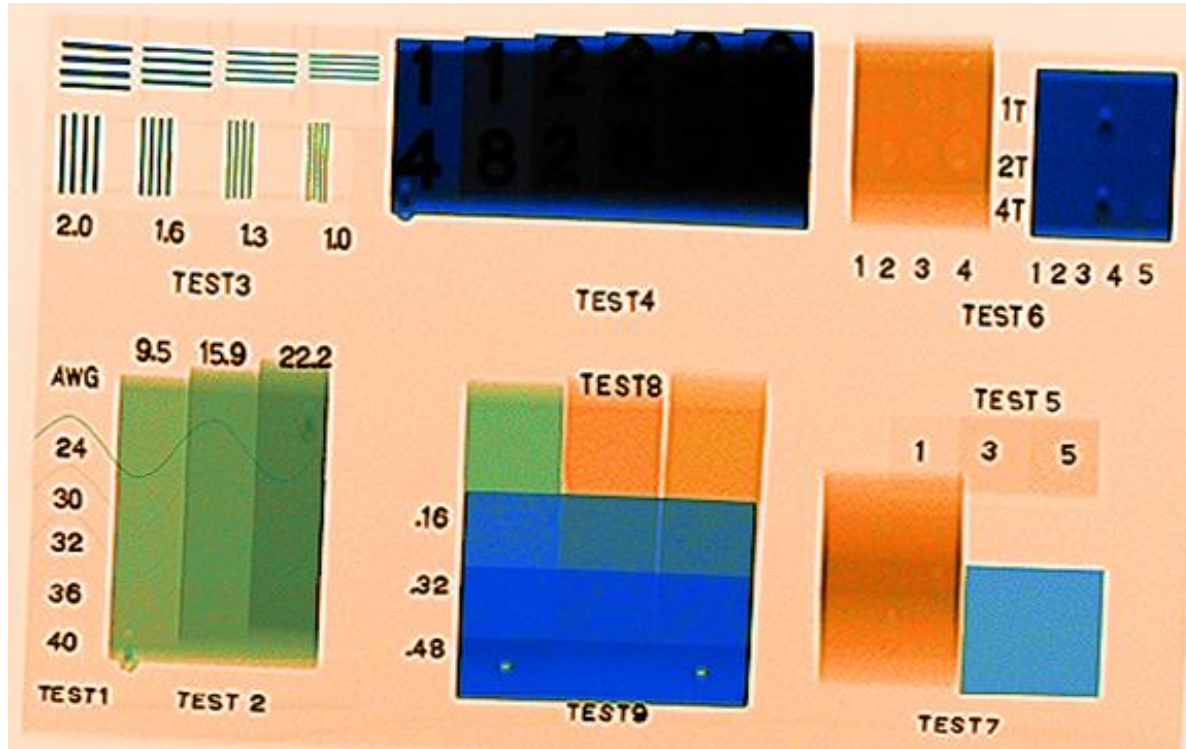
CTX vs ATX Comparison

SVS Countermeasures training

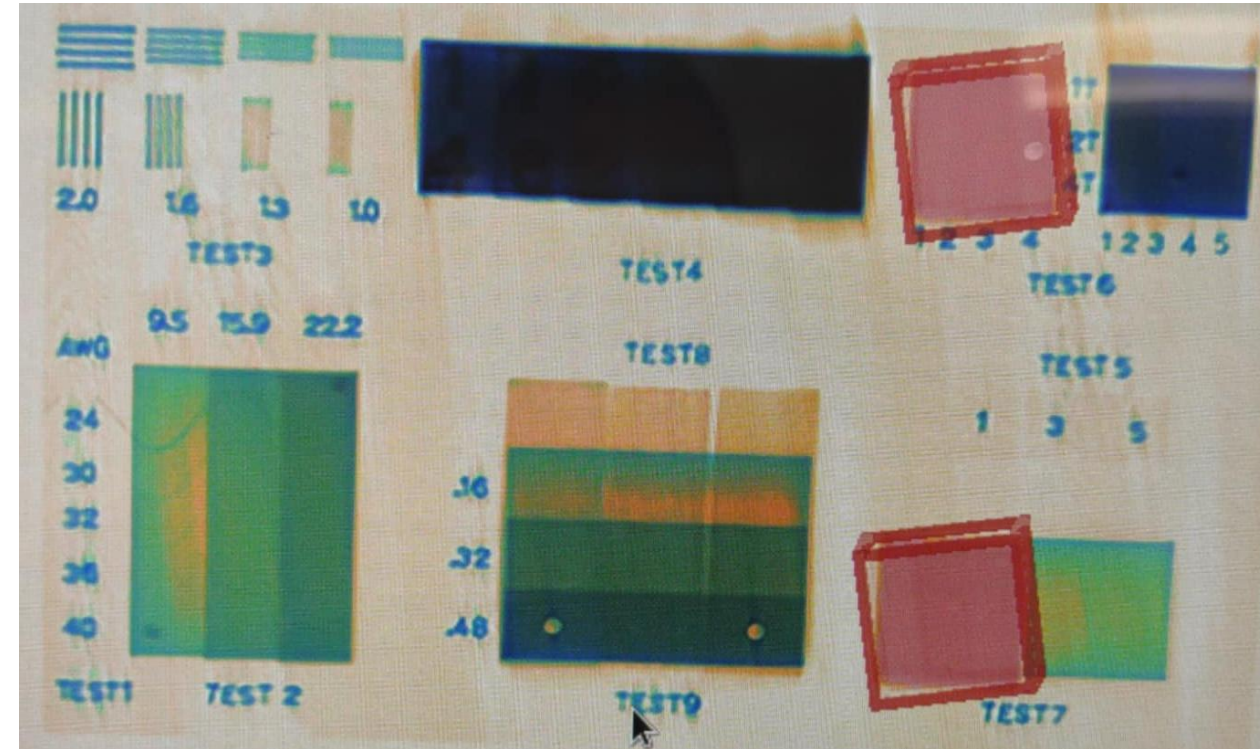


CTIX vs ATIX Comparison

ASTM F792-08



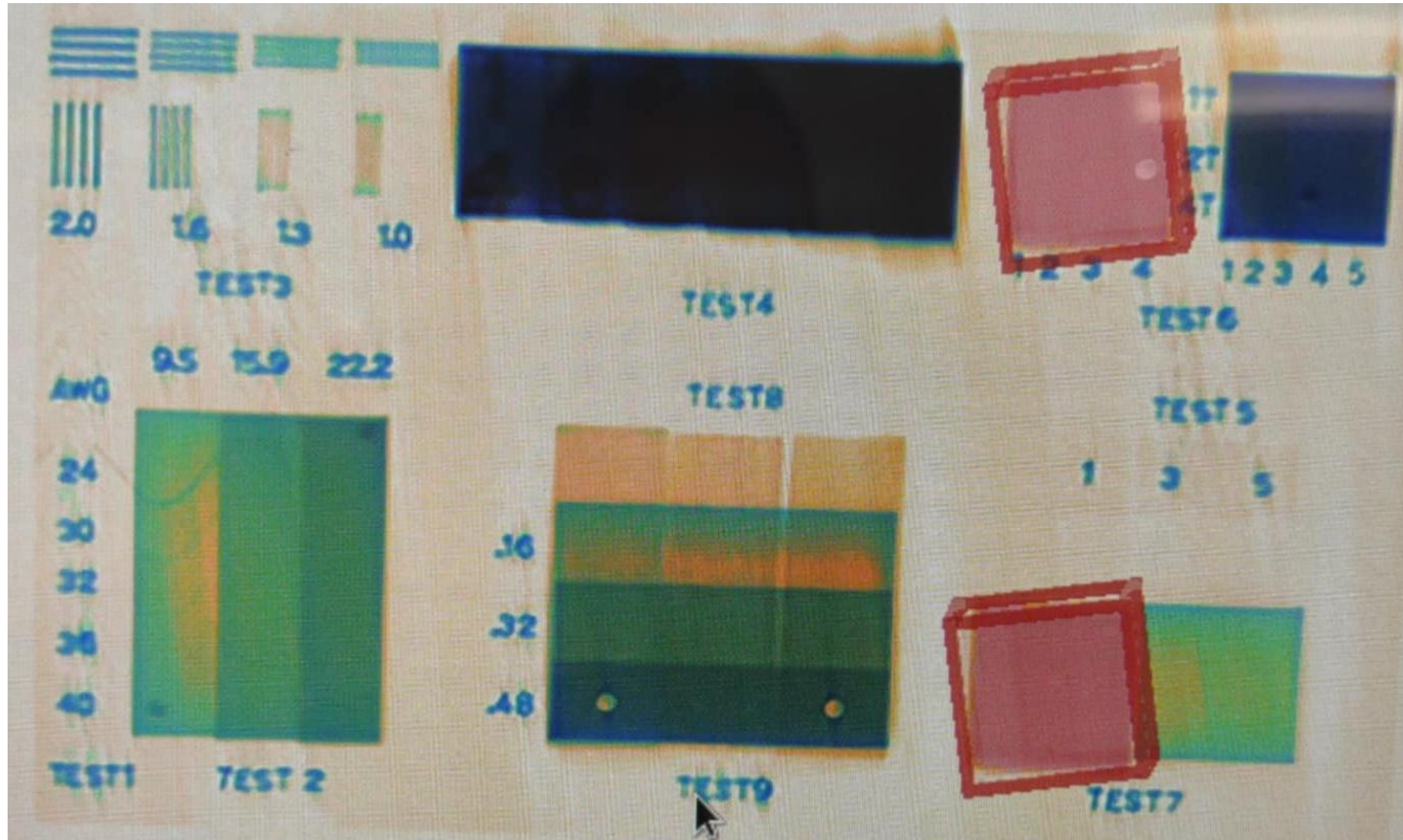
NON CT



CT

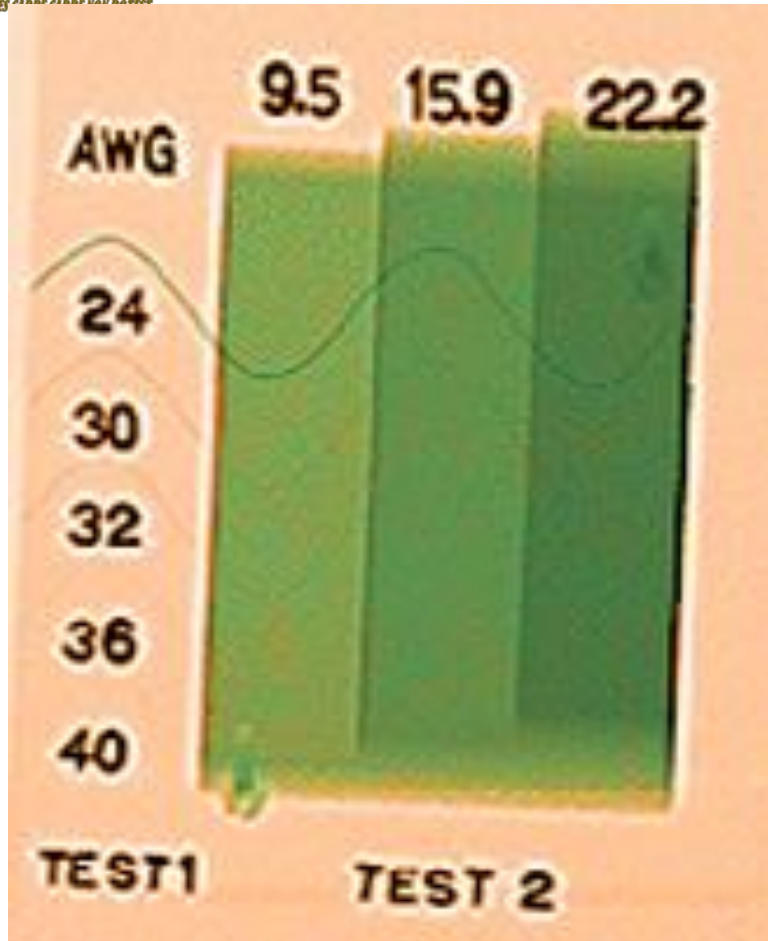


CTIX vs ATIX Comparison



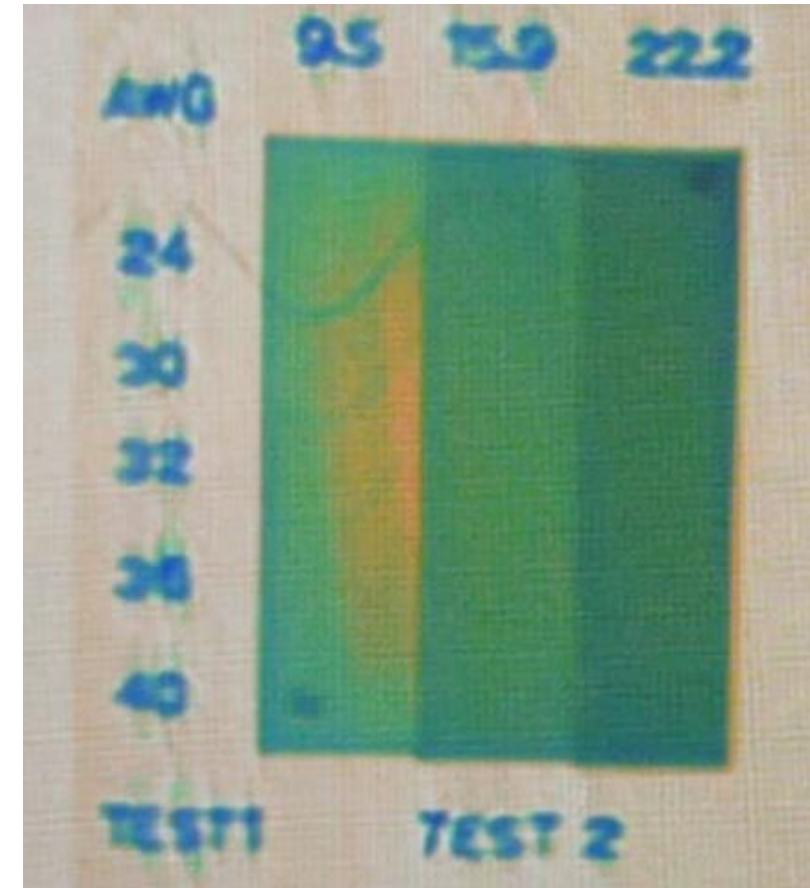


CTIX vs ATIX Comparison



TEST 1: 4 out of 5= 80%

TEST 2: 9 out of 18= 50%



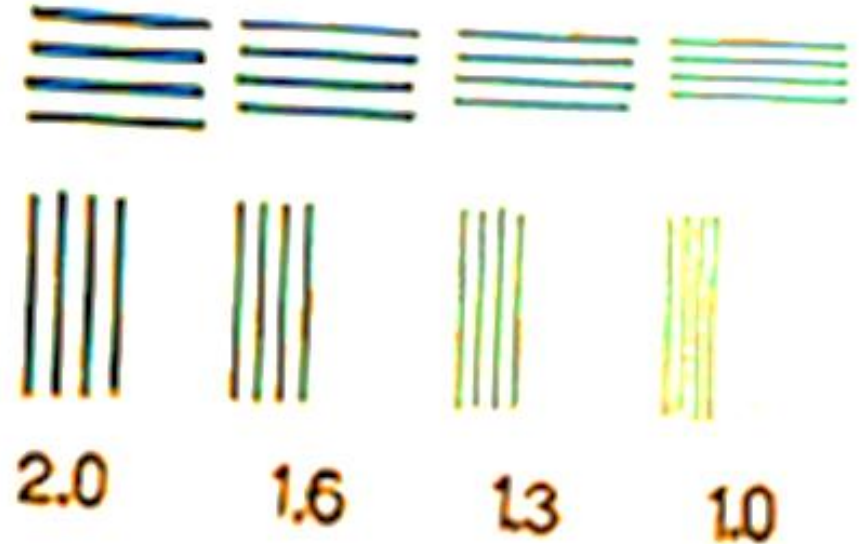
CT TEST 1: 1 out of 5= 20%

CT TEST 2: 4 out of 18= 22%

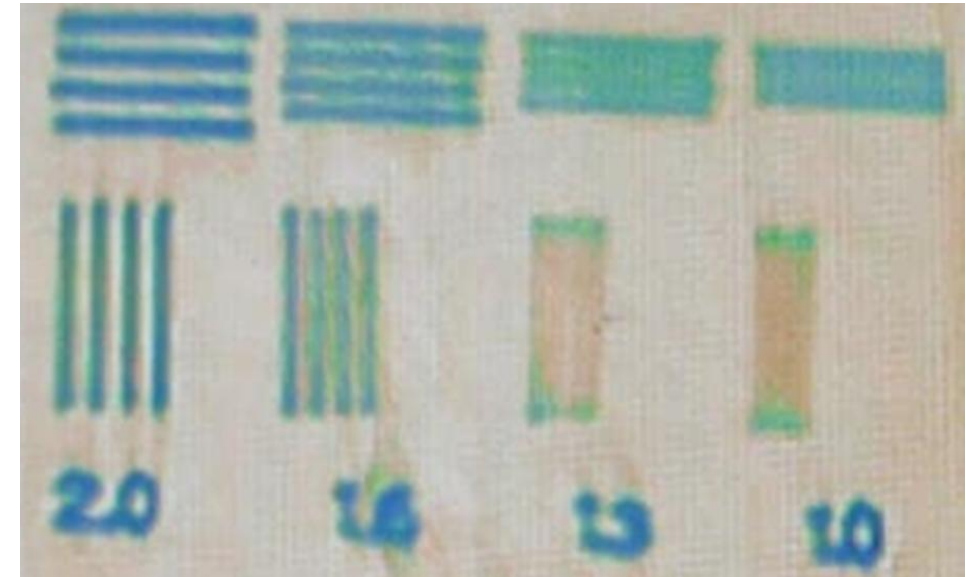


CTIX vs ATIX Comparison

TEST 3: 4 out of 4= 100%



CT TEST 3: 2 out of 4= 50%





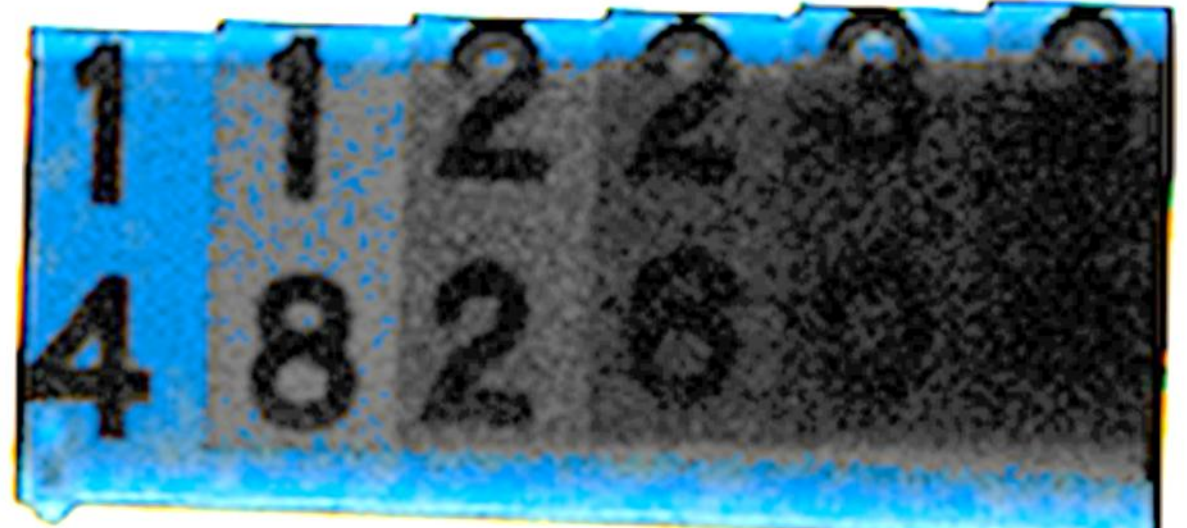
CTIX vs ATIX Comparison

TEST 4: 5 out of 6

30 mm Penetration

83%

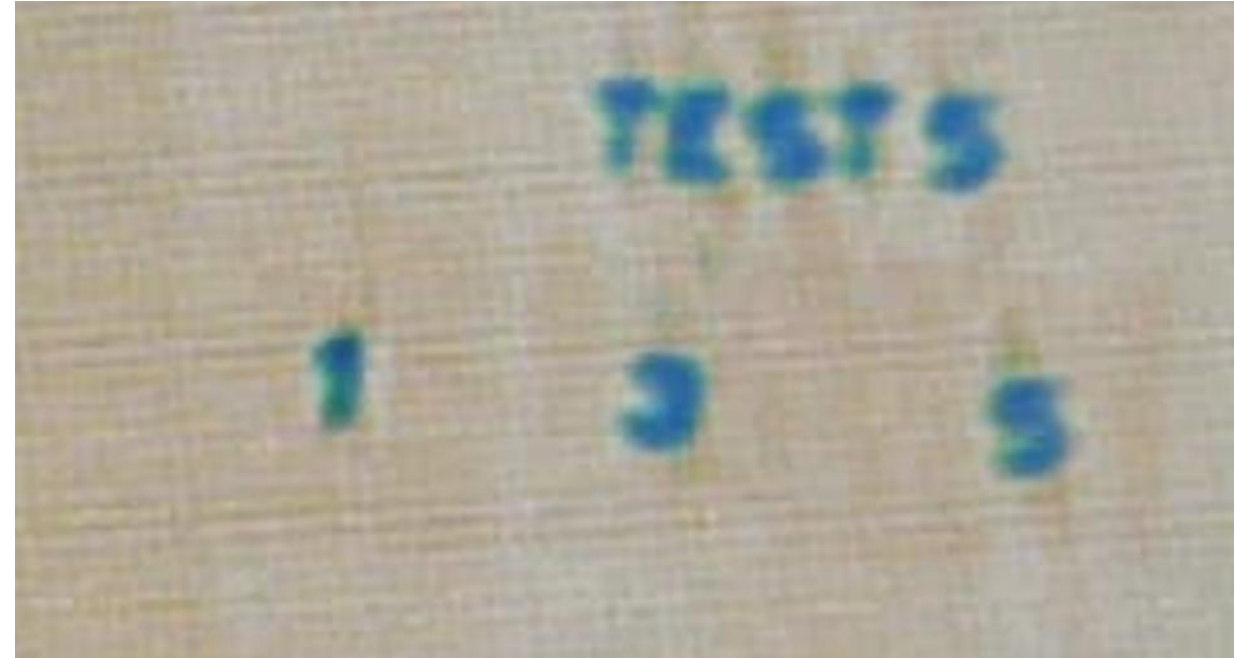
CT TEST 4: 2 out of 6
16 mm
33%



CTIX vs ATIX Comparison

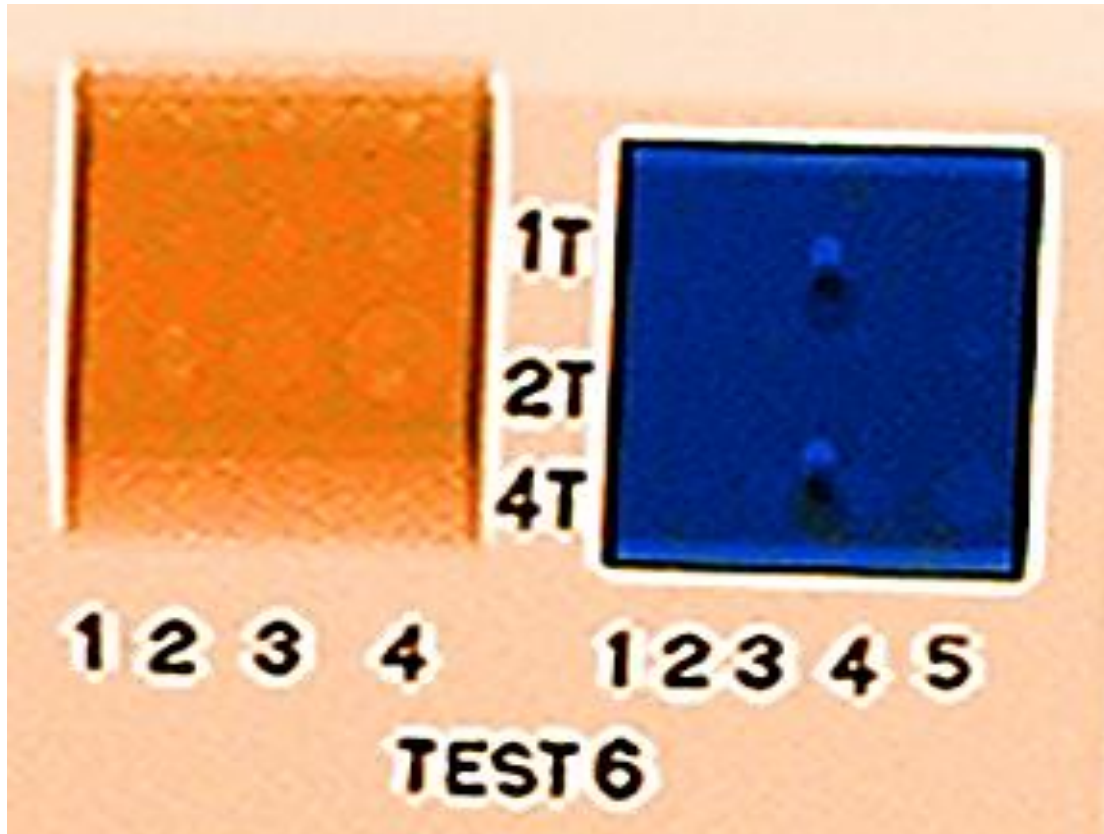


TEST 5: 3 of 3= 100%

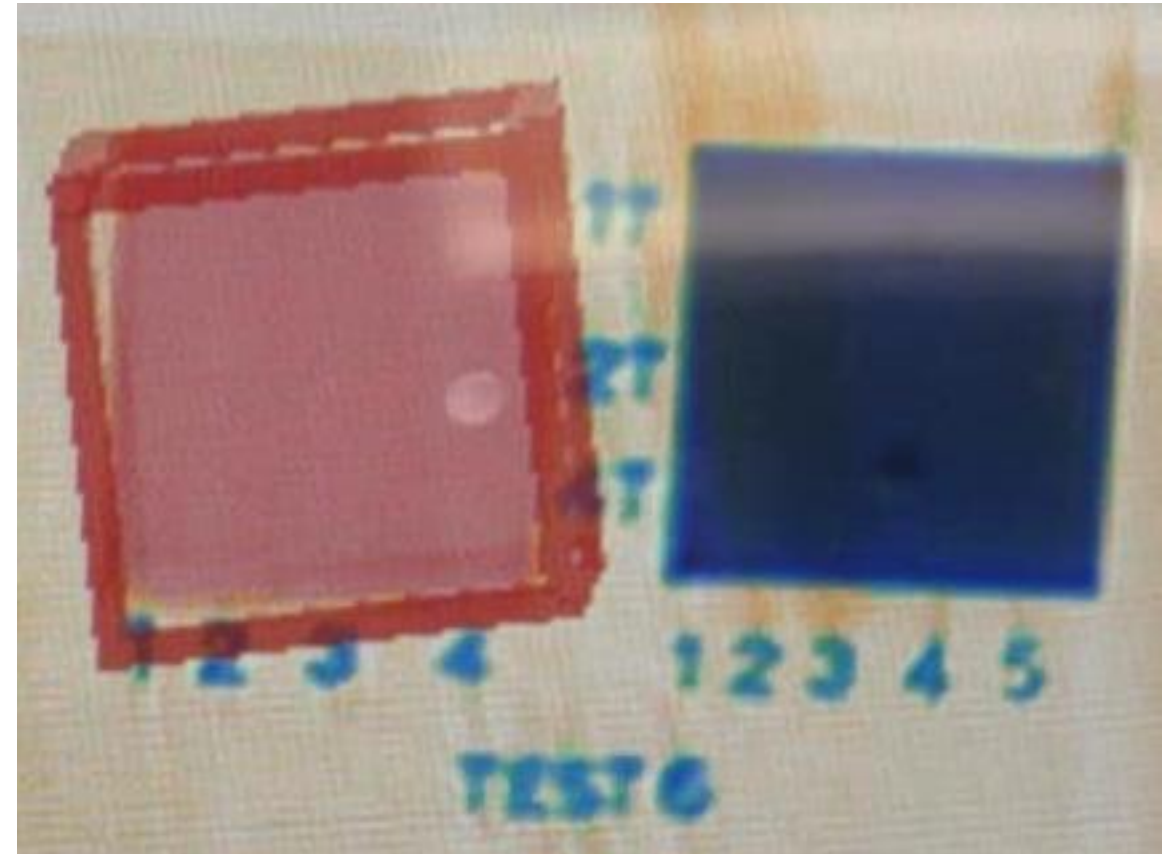


CT TEST 5: 0 of 3= 0%

CTIX vs ATIX Comparison



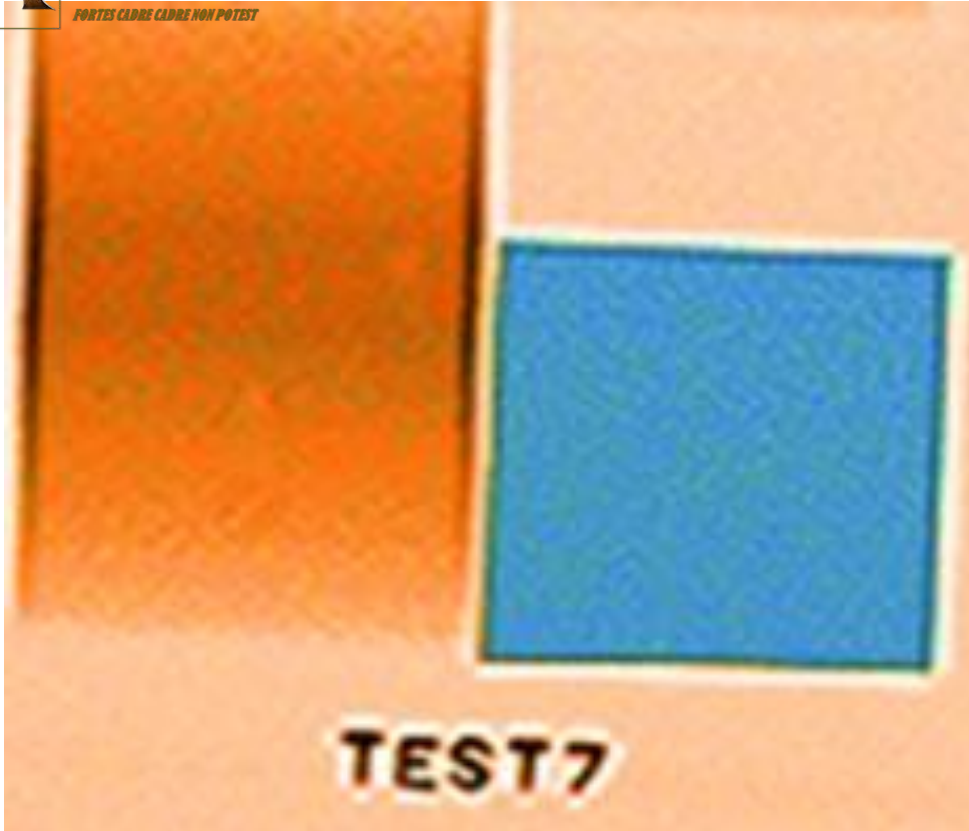
TEST 6: 12 of 27= 44%



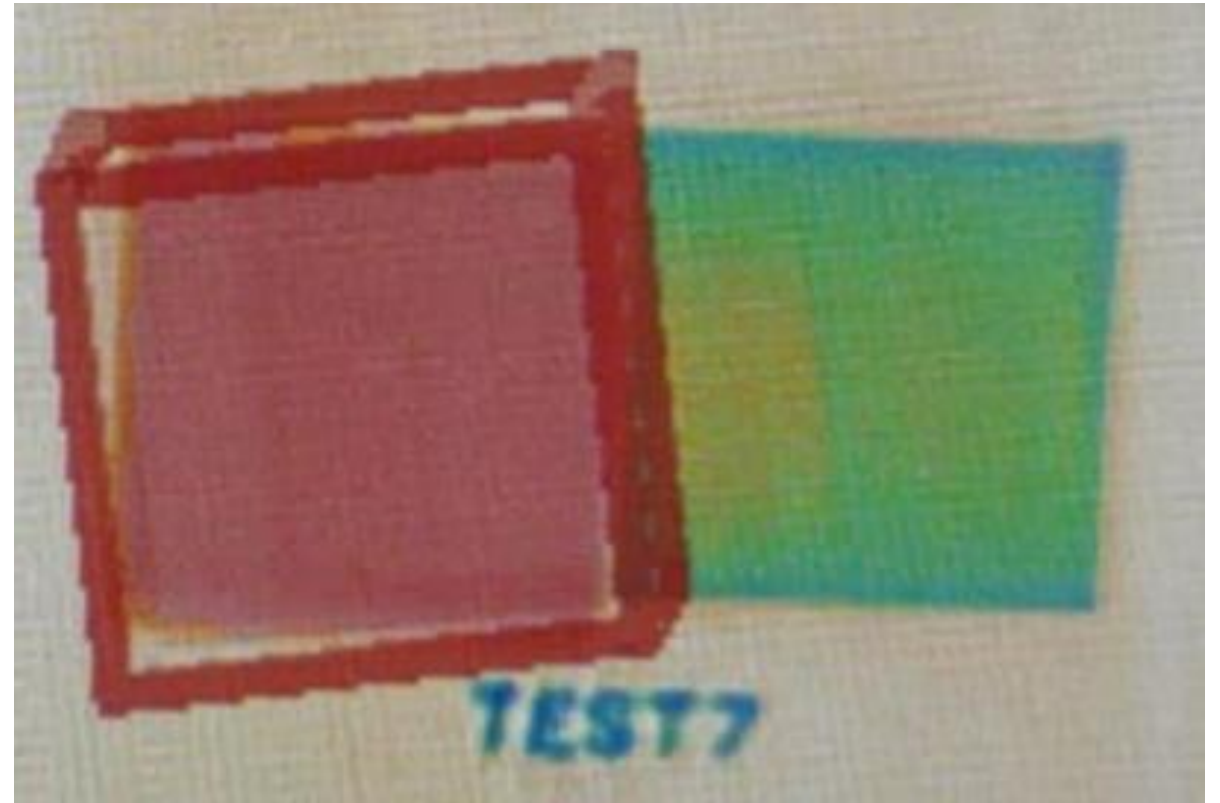
CT TEST 6: 2 of 27= 7%



CTIX vs ATIX Comparison



TEST 7: 2 of 2= 100%



CT TEST 7: 1 of 2= 50%



CTIX vs ATIX Comparison



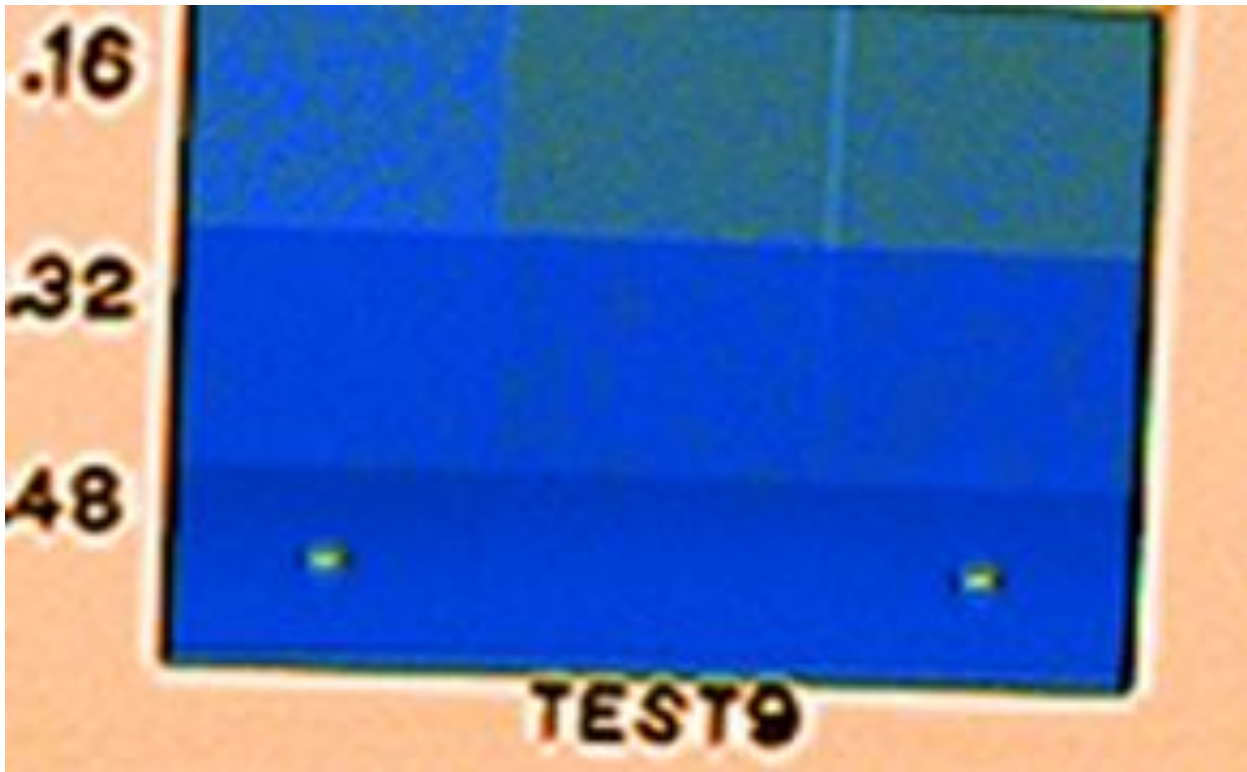
TEST 8: 3 of 3= 100%



TEST 8: 0 of 3= 0%



CTIX vs ATIX Comparison



TEST 9: 5 of 9= 55%



TEST 9: 0 of 9= 0%

CTIX vs ATIX Comparison

NON-CT Scores

TEST 1: 4 of 5 = 80%

TEST 2: 9 of 18 = 50%

TEST 3: 4 of 4 = 100%

TEST 4: 5 of 6 = 83%

TEST 5: 3 of 3 = 100%

TEST 6: 12 of 27 = 44%

TEST 7: 5 of 9 = 55%

TEST 8: 3 of 3 = 100%

TEST 9: 5 of 9 = 55%

50 of 84 = 60%

CT Scores:

TEST 1: 2 of 5 = 20%

TEST 2: 4 of 18 = 22%

TEST 3: 2 of 4 = 50%

TEST 4: 2 of 6 = 33%

TEST 5: 3 of 3 = 100%

TEST 6: 2 of 27 = 7%

TEST 7: 1 of 2 = 50%

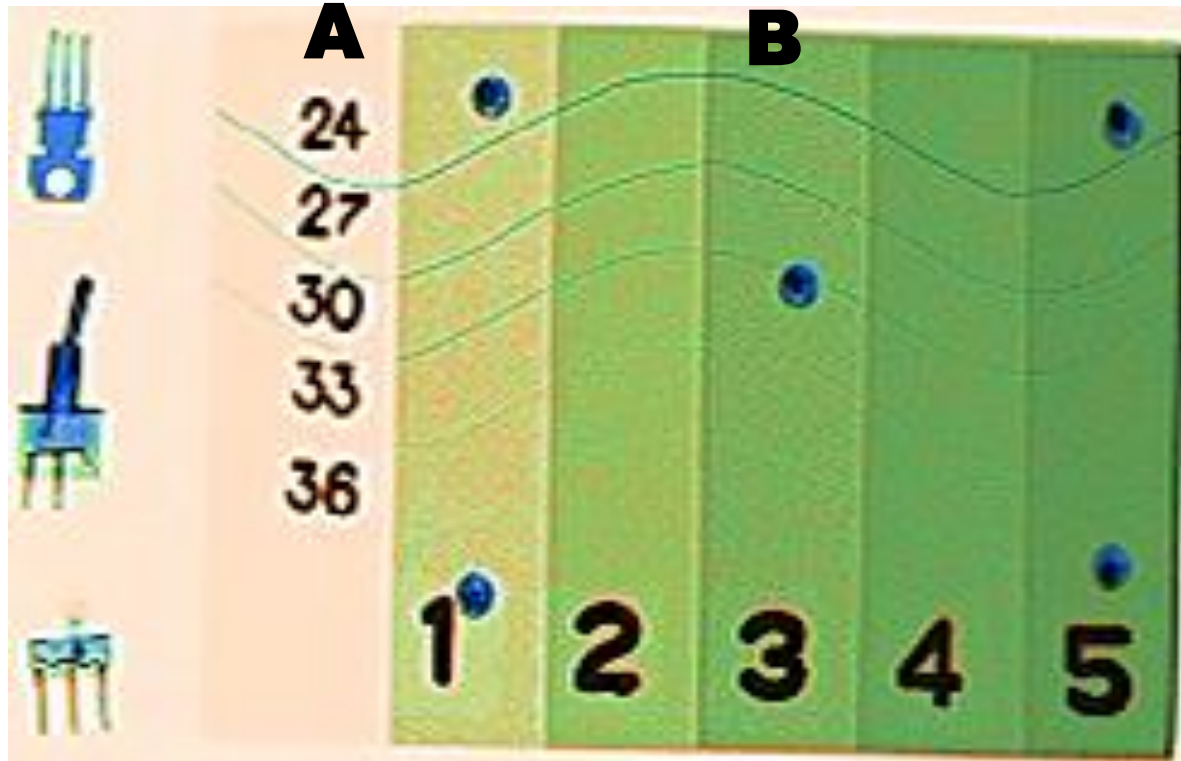
TEST 8: 0 of 3 = 0%

TEST 9: 0 of 9 = 0%

16 of 84 = 19%

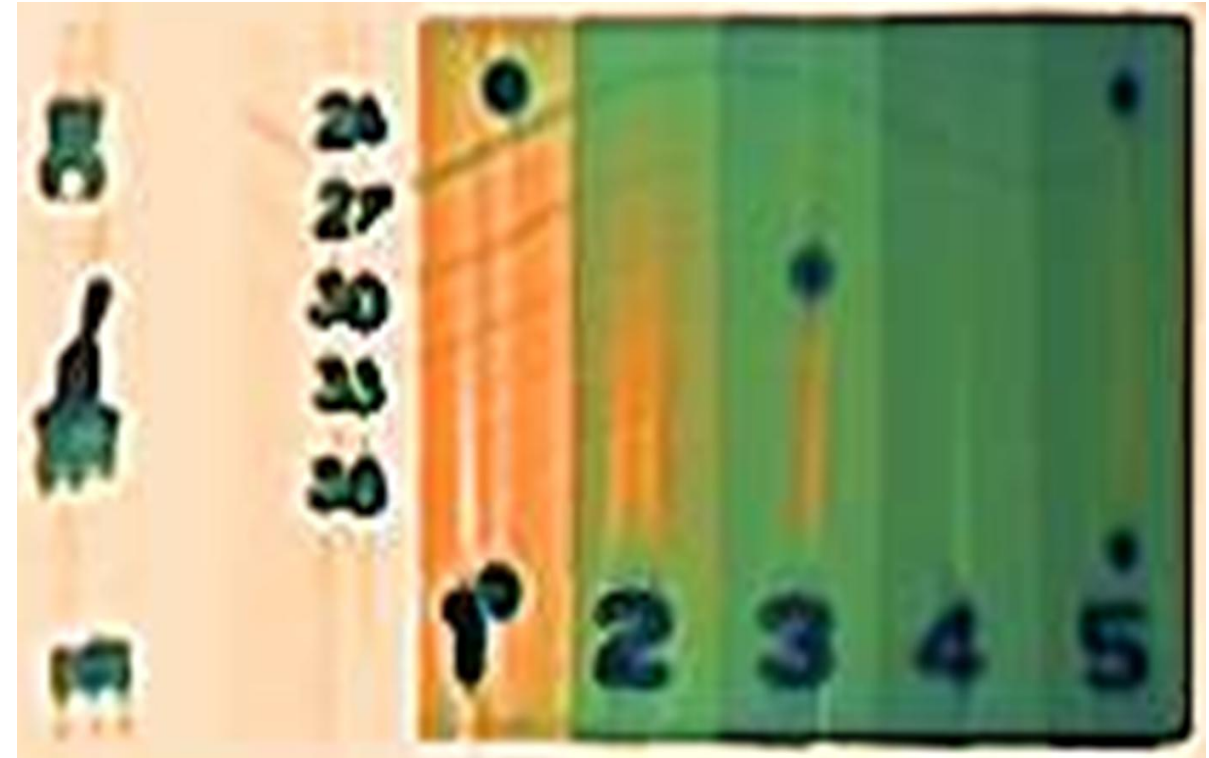
CTIX vs ATIX Comparison

ASTM F792-17-RT



TEST 9A: 4 of 5 = 80%

TEST 9B: 25 of 25 = 100%



CT TEST 9A: 0 of 5 = 0%

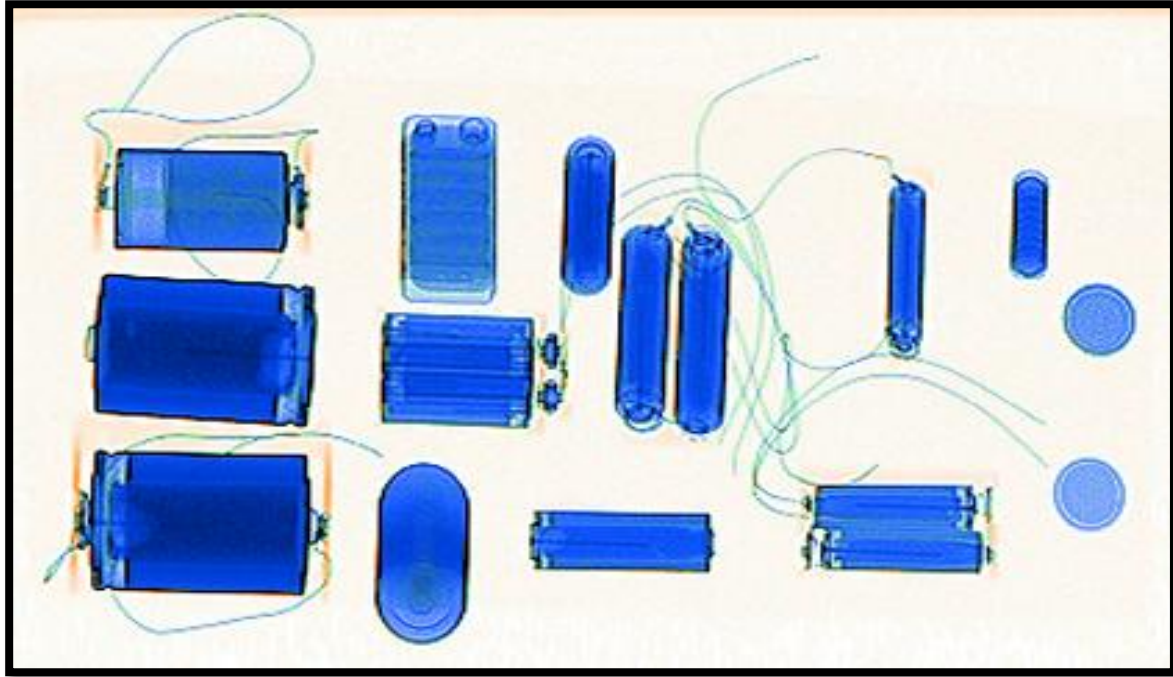
CT TEST 9B: 10 of 25 = 40%



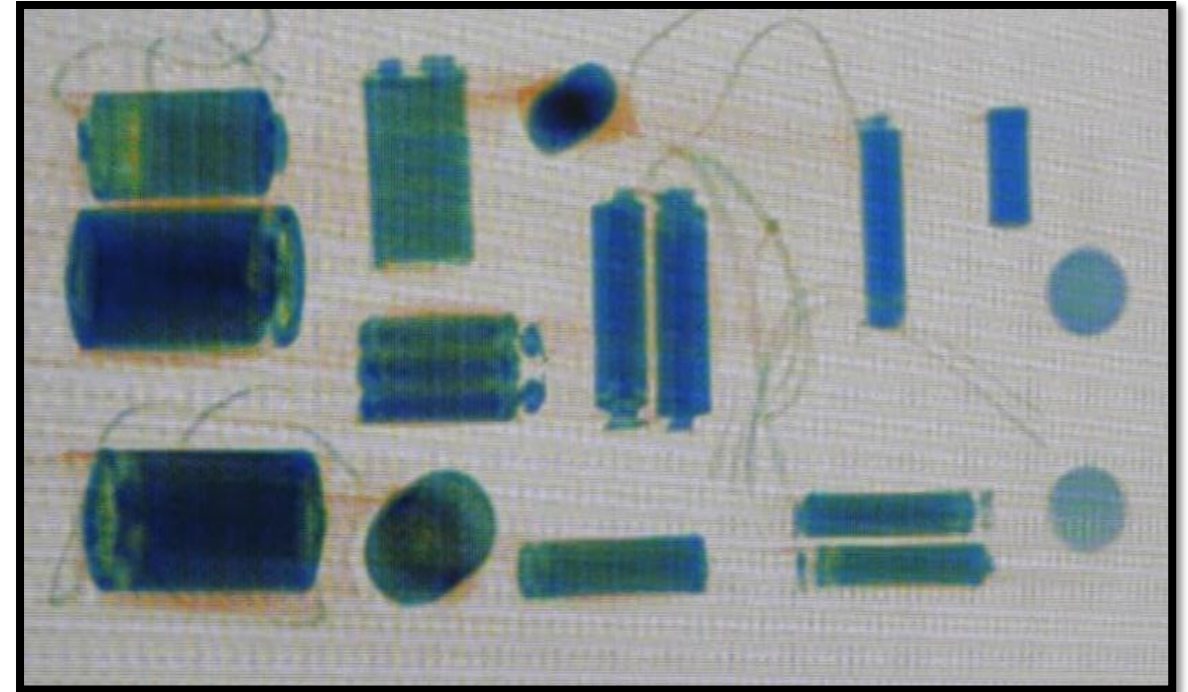
CTIX vs ATIX Comparison



CTIX vs ATIX Comparison



Correct color blue
14 out of 14 = 100%



CT Correct color blue
6 out of 14 = 43%

CTIX vs ATIX Comparison

Conclusion:

When you compare the new CT systems being deployed at airports vs non-CT systems using established x-ray test objects the scoring differences are staggering different.

It seems that any method of measuring an x-ray has been through out the window as the score from these CT systems would have never been acceptable in the past.